



Creation 70 MegaClic

Wood & mineral designs
for heavy traffic



Creation 70 MegaClic

New design collection



**Wood & mineral designs,
available in Tiles & Planks**

Décors bois & minéraux, disponibles en Dalles & Lames
Neue Design-Kollektion, erhältlich als Fliesen & Planken



**Inspired by the latest Interior Design
Trends for Commercial Spaces**

Inspirée des dernières tendances en design intérieur
pour les espaces commerciaux
Inspiziert von den neuesten Interior-Design-Trends
für gewerbliche Räume



**Designed to combine with GTI® or
Design Tile and reach perfect harmony**

Conçue pour s'associer en parfaite harmonie
avec GTI® Max ou Design Tile
Entwickelt zur Kombination mit GTI® Max
oder Design Tile für eine perfekte Harmonie

Designed for Comfort & Safety



**Noise reduction vs ceramic
> Acoustic comfort**

Réduction du bruit vs céramique > confort acoustique
Geräuschreduzierung gegenüber Keramik > akustischer
Komfort



R10 > Slip resistance

R10 > Résistance à la glissance
R10 > Rutschhemmung



**Protecshield surface treatment
> easy cleaning**

Traitement de surface Protecshield > nettoyage facile
Protecshield-Oberflächenvergütung > einfache
Reinigung



Interior
Designer



interiordesigner.gerflor.com

Samples



Packaging

Format (mm)	Tile/ plank per box	Sqm per box	Sqm per pallet
Creation 70 Megaclic			
200,5 × 1235,5	6	1,49	80,46
489 × 989	4	1,93	88,78

Full design
concept
with matching
skirtings, profiles & mats

Albion Beige

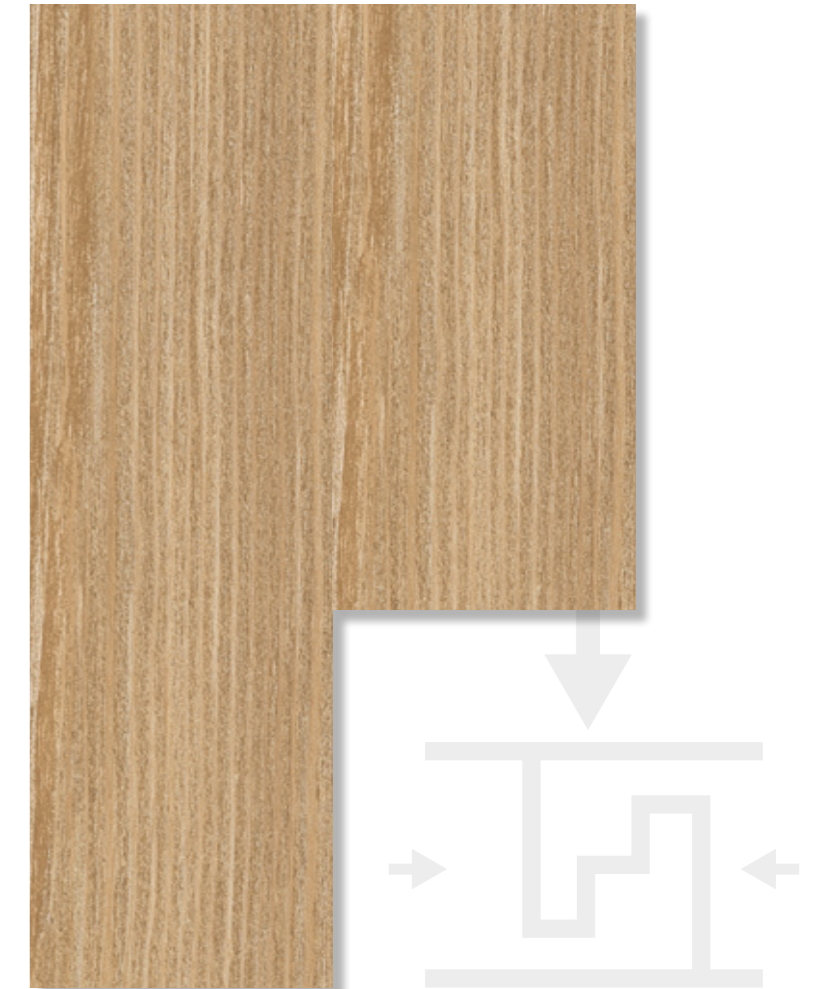
MegaClic System

patented by Gerflor



**Patented double vertical clic specifically
designed for high traffic environments**

Système double clic vertical breveté spécialement
conçu pour les zones à fort trafic
Patentiertes, vertikales Doppel-Klicksystem speziell für
stark frequentierte Bereiche



Rolling traffic compliant* up to 700kg

Résiste au trafic roulant jusqu'à 700 kg
Befahrbar mit einem Hubwagen bis zu 700 kg



Adhesive free installation*

Pose sans colle / Klebstofffreie Verlegung



Renovation over ceramic

Rénovation sur carrelage / Verlegung auf keramischen Fliesen



Easy to replace

Facile à remplacer / Einfach auszutauschen

*For more information, please see Gerflor installation guidelines
Pour plus d'informations, veuillez consulter les recommandations de pose Gerflor
Für weitere Informationen beachten Sie bitte die Gerflor-Verlegeanleitung

we care / we act

our commitments for 2030



Climate

Low CO₂ footprint /
EPD available

Faible empreinte CO₂ /
EPD disponible

Geringer CO₂-Fußabdruck /
EPD verfügbar



Ressources

Recycled content 29% /
Mineral & recycled
content = 77%

Contenu recyclé 29% /
Contenu minéral & recyclé
= 77%

Durchschnittlicher
Recyclinganteil 29% /
mineralischer- & recycelter
Inhalt 77%



Circularity

Adhesive free / easy re-cycle
(Gerflor Second Life program)

Sans adhésif / facile à recycler
(programme Gerflor Seconde Vie)

Ohne Klebstoff / kann im
Rahmen des Second Life
Programms von Gerflor
recycled werden



Indoor air quality

Best-in-class performance
A+ Certified & Floorscore

Meilleure performance
du marché
Certifié A+ & Floorscore

Beste Marktperformance /
A+ & Floorscore zertifiziert

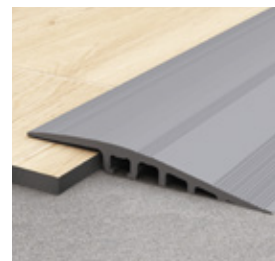


GTI® Max Carbon / Creation 70 MegaClic Albion

Full Design Concept

Do not forget the finishes & tools

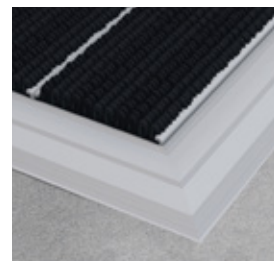
N'oubliez pas les finitions et les outils / Vergessen Sie nicht das Zubehör



Aluminium Ramp
Code : 0505



PVC Ramp
Code : 0500
(colours: Lead, Linen)



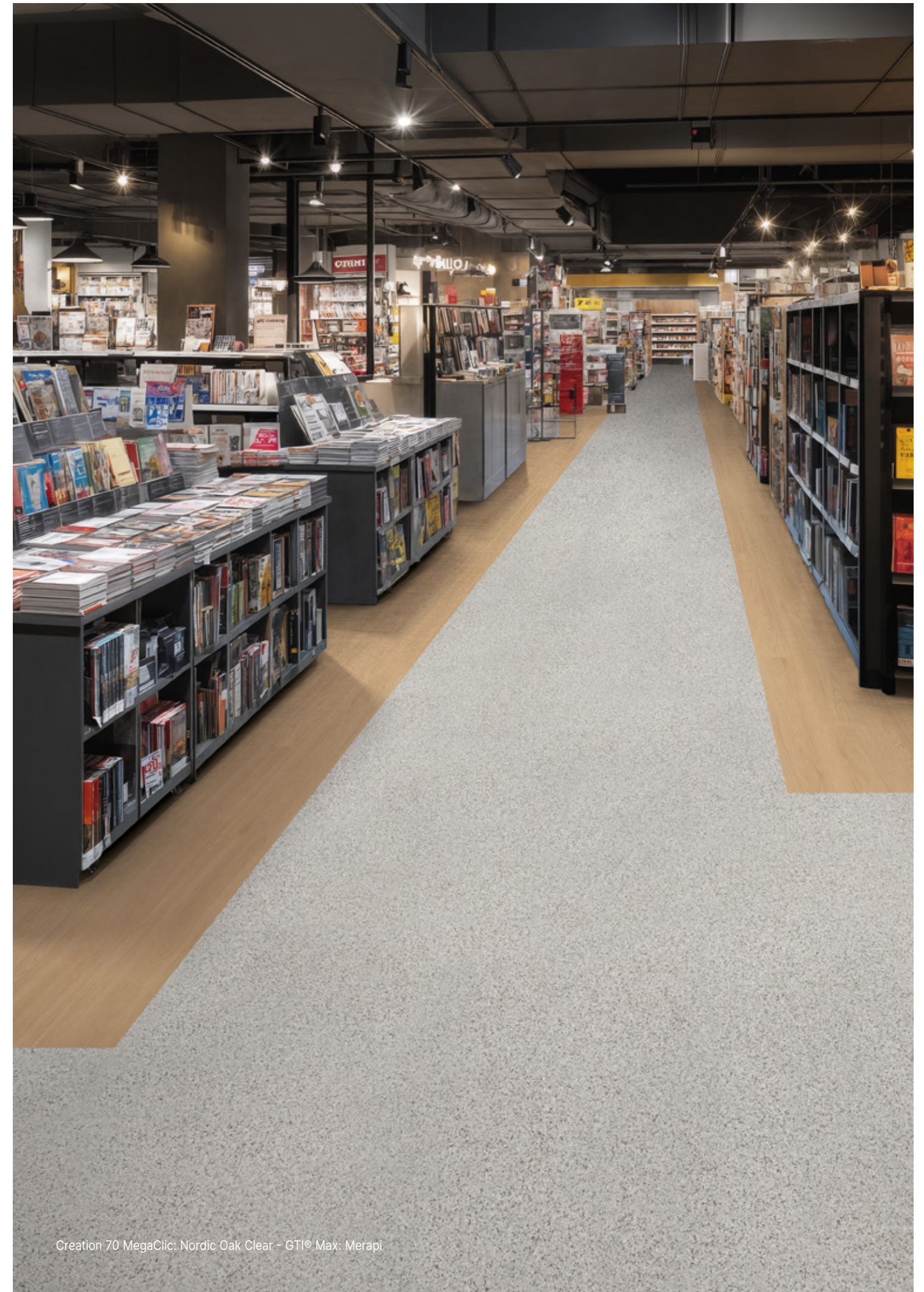
Entrance mat
Esplanade 9000
Code : 1700



Anti Bounce Mallet
Code : 5951



Welding rods CR50
Code : H009



Creation 70 MegaClic: Nordic Oak Clear - GTI® Max: Merapi

The Art of Retail Spaces

L'art des espaces de vente

Decorative and stylish ideas to inspire zoning and ambiance in every area of your retail store with GTI® Max (or Design Tile) floor coverings.

Des idées décoratives et élégantes pour inspirer le zoning et l'ambiance de chaque zone de votre magasin avec les revêtements de sol GTI® Max (ou Design Tile).



Endless possibilities

with coordinated designs to combine
Des possibilités infinies de combinaisons
grâce à des designs coordonnés

Creation & GTI® Max (or Design Tile)

to reach perfect harmony

Creation & GTI® Max (ou Design Tile)
pour une harmonie parfaite.



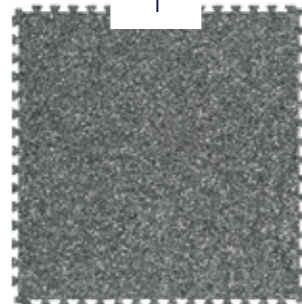
- 04 Tableware**
Art de la table
- 05 Flowers**
Fleurs
- 06 Beauty**
DPH (Droguerie / Parfumerie / Hygiène)
- 07 Bakery**
Boulangerie
- 08 Wine cellar**
Cave
- 09 Fashion**
PAP (Prêt à Porter)
- 10 Organic products**
BIO
- 11 Fresh produce**
FLEG (Fruits & Légumes)
- 12 Snack bar**
Snacking
- 13 Checkouts**
Caisses
- 14 Toys**
Jouets
- 15 Bookstore & Electronics**
Culture
- 16 Sustainability, our signature**
Le développement durable, notre signature
- 17 ProtecShield™**
- 18 Design coordination with GTI® Max (or Design Tile)**
Association décor avec GTI® Max (ou Design Tile)
- 19 Ultra natural look & feel**
Aspect et toucher ultra naturels

Tableware

Art de la table



Creation 70 MegaClic:
1770 Camino Light Grey



GTI® Max: 2249 Stromboli

..... or



Design Tile: 1693 Manhattan Grey

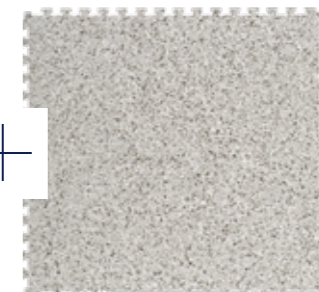
Creation 70 MegaClic: 1770 Camino Light Grey / GTI® Max: 2249 Stromboli

Flowers

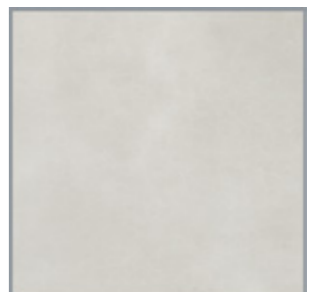
Fleurs



Creation 70 MegaClic: 1771 Camino Medium Grey / GTI® Max: 2265 Merapi



..... or



Creation 70 MegaClic:
1771 Camino Medium Grey

GTI® Max: 2265 Merapi

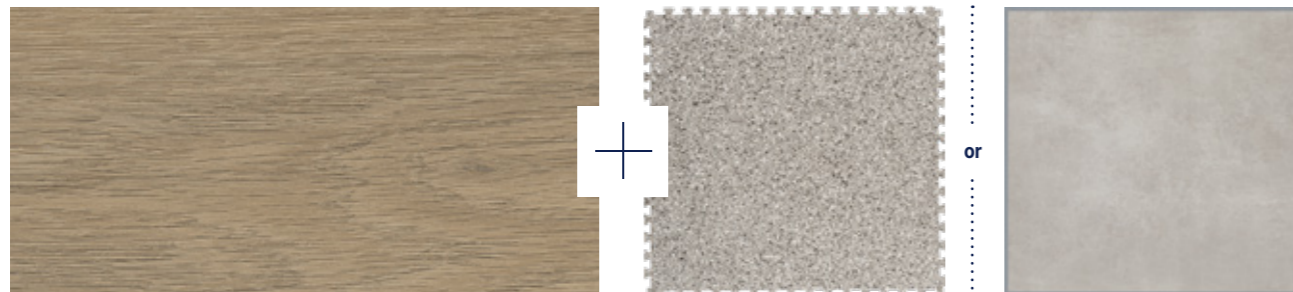
Design Tile: 1695 Manhattan Cloud

Beauty

DPH (Droguerie / Parfumerie / Hygiène)



Creation 70 MegaClic: 1765 Nordic Oak Natural / GTI® Max: 2264 Piton



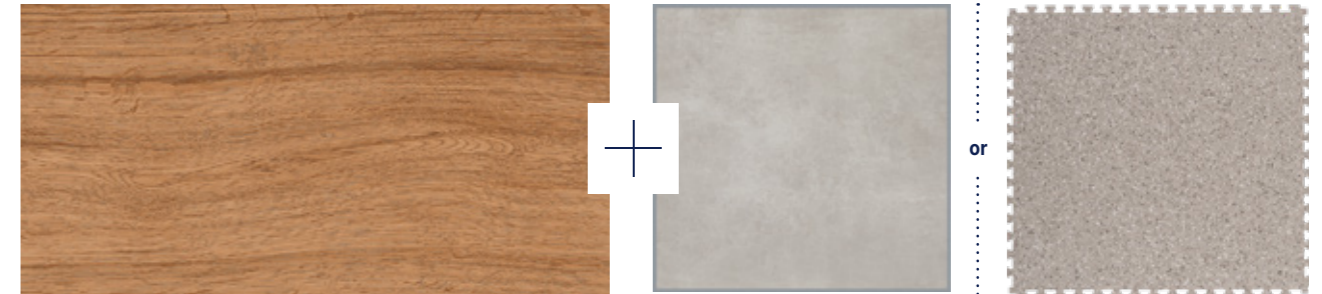
Creation 70 MegaClic:
1765 Nordic Oak Natural

GTI® Max: 2264 Piton

Design Tile: 1694 Manhattan Dust

Bakery

Boulangerie



Creation 70 MegaClic:
1766 Bodega Chestnut

Design Tile: 1694 Manhattan Dust

GTI® Max: 2267 Fuji

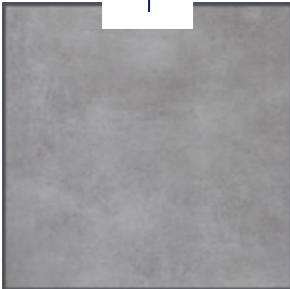


Creation 70 MegaClic: 1766 Bodega Chestnut / Design Tile: 1694 Manhattan Dust

Wine cellar

Cave

Creation 70 MegaClic:
1764 Nordic Oak Clear



Design Tile: 1693 Manhattan Grey

..... or



GTI® Max: 2265 Merapi



Design Tile: 1693 Manhattan Grey / Creation 70 MegaClic: 1764 Nordic Oak Clear

Fashion

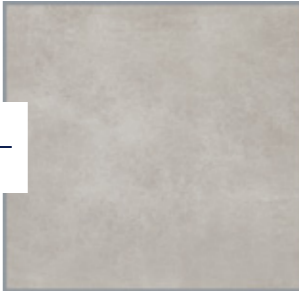
PAP (Prêt à Porter)



Design Tile: 1694 Manhattan Dust / Creation 70 MegaClic: 1769 Tela Denim



Creation 70 MegaClic:
1769 Tela Denim



Design Tile:
1694 Manhattan Dust



GTI® Max: 2264 Piton

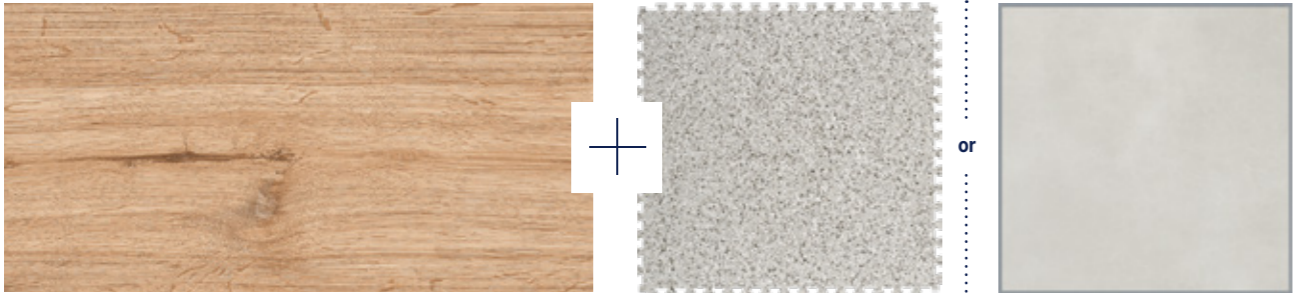
or

Organic products

BIO



Creation 70 MegaClic: 1767 Bodega Natural / GTI® Max: 2265 Merapi



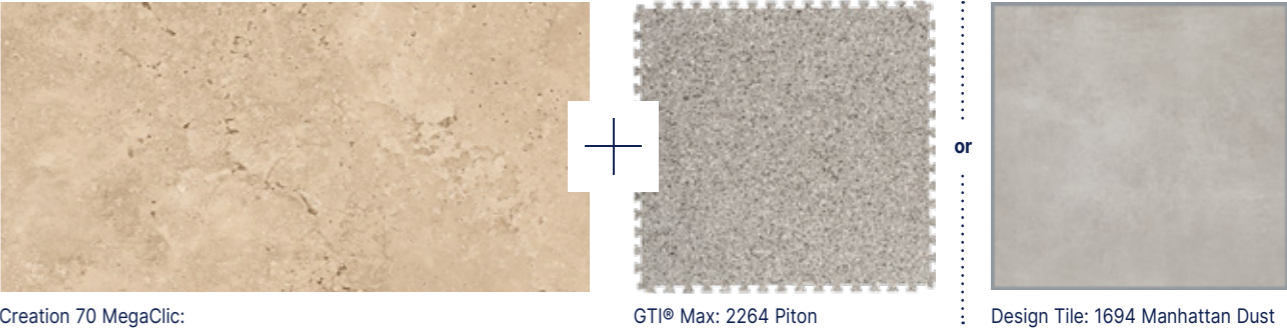
Creation 70 MegaClic: 1767 Bodega Natural

GTI® Max: 2265 Merapi

Design Tile: 1695 Manhattan Cloud

Fresh produce

FLEG (Fruits & Légumes)



Creation 70 MegaClic: 1768 Rapolano Light Beige

GTI® Max: 2264 Piton

Design Tile: 1694 Manhattan Dust



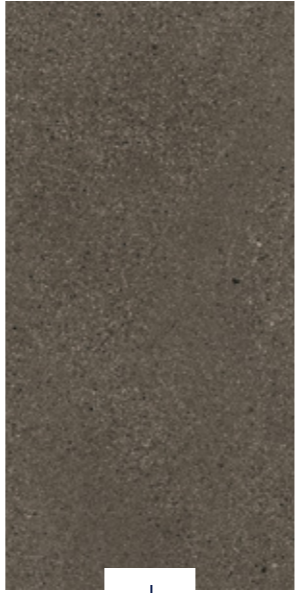
GTI® Max: 2264 Piton / Creation 70 MegaClic: 1768 Rapolano Light Beige

Snack bar

Snacking



Creation 70 MegaClic:
1772 Camino Dark Grey



Design Tile: 1694 Manhattan Dust

..... or



GTI® Max: 2264 Piton

Creation 70 MegaClic: 1772 Camino Dark Grey / Design Tile: 1694 Manhattan Dust

Checkouts

Caisses



GTI® Max: 2265 Merapi / Creation 70 MegaClic: 1763 Albion Honey



or



Creation 70 MegaClic:
1763 Albion Honey

GTI® Max: 2265 Merapi

Design Tile: 1695 Manhattan Cloud

Toys

Jouets

Creation 70 MegaClic:
1764 Nordic Oak Clear



GTI® Max: 2265 Merapi

..... or



Design Tile: 1693 Manhattan Grey



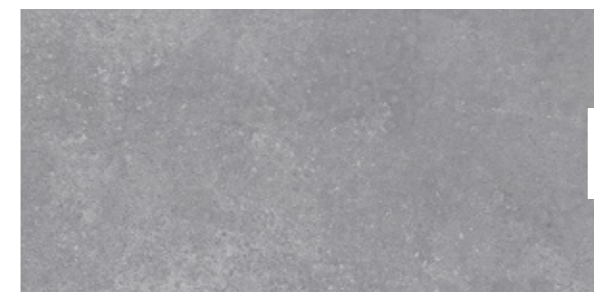
Creation 70 MegaClic: 1764 Nordic Oak Clear / GTI® Max: 2265 Merapi

Bookstore & Electronics

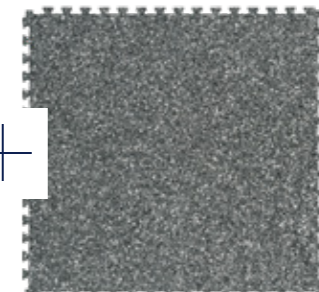
Culture



Creation 70 MegaClic: 1773 Shady Concrete Grey / GTI® Max: 2249 Stromboli



Creation 70 MegaClic:
1773 Shady Concrete Grey



Design Tile:
GTI® Max: 2249 Stromboli



Design Tile: 1699 Luberon Grey

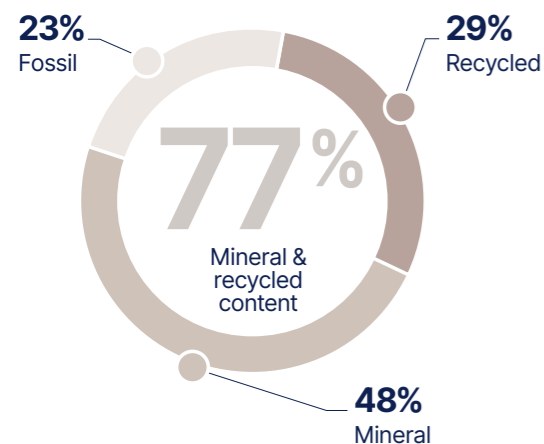
Sustainability, our signature

Le développement durable,
notre signature

Recycled and mineral content focus to set a new standard

Une priorité donnée aux matériaux recyclés
et minéraux pour établir un nouveau standard

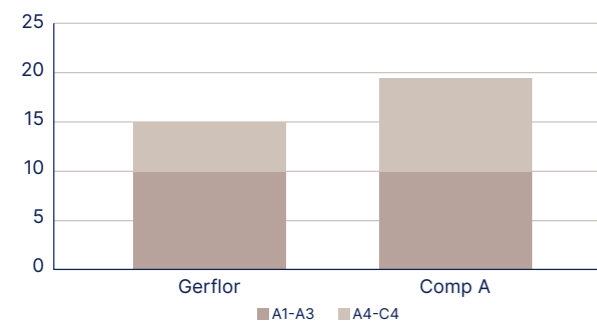
Creation 70 MegaClic
Composition



Creation 70 MegaClic

smallest LCA (Life Cycle Assessment)
kg CO₂ eq/sqm

25%
lower than
the average



Sustainable cleaning protocol with ProtecShield™

Protocole de nettoyage durable
avec ProtecShield™

Reduced water consumption

Réduction de la consommation d'eau

Reduced detergent need

Réduction de la consommation de détergent

Reduced carbon footprint

Empreinte carbone réduite



Sustainability also means caring for people

Le développement durable,
c'est aussi prendre soin
des personnes

Improved indoor air quality

Qualité de l'air intérieur améliorée

Optimised acoustic comfort

Confort acoustique optimisé

Natural and biophilic design

Design naturel et biophilique

Design coordination with GTI® Max (or Design Tile)

Association décor avec GTI® Max (ou Design Tile)

Each design in this book is thoughtfully paired with other flooring to inspire cohesive and stylish combinations across retail zones.

Chaque design de ce catalogue est soigneusement associé aux autres revêtements pour inspirer des combinaisons cohérentes et élégantes dans les espaces de vente.

Colours	Colour code	Dimensions (mm)	Emboss	Combination with GTI® Max	Combination with Design Tile
0545	Serena	200,5 × 1235,5	Scandinavian	2266 Vesuvio	1696 Acero Light
0577	Albion	200,5 × 1235,5	Scandinavian	2249 Stromboli	1693 Manhattan Grey
0358	Moon Island	200,5 × 1235,5	Brushed	2265 Merapi	1696 Acero Light
0357	Portobello	200,5 × 1235,5	Brushed	2264 Piton	1693 Manhattan Grey
0538	Midwest	200,5 × 1235,5	Scandinavian	2264 Piton	1694 Manhattan Dust
1052	Muse Sand	200,5 × 1235,5	Scandinavian	2265 Merapi	1698 Marmetta Beige
0800	Toasted Wood Roadster	200,5 × 1235,5	Scandinavian	2264 Piton	1694 Manhattan Dust
1762	Albion Beige	200,5 × 1235,5	Scandinavian	2264 Piton	1694 Manhattan Dust
1763	Albion Honey	200,5 × 1235,5	Scandinavian	2265 Merapi	1695 Manhattan Cloud
1764	Nordic Oak Clear	200,5 × 1235,5	Scandinavian	2265 Merapi	1693 Manhattan Grey
1765	Nordic Oak Natural	200,5 × 1235,5	Scandinavian	2264 Piton	1694 Manhattan Dust
1766	Bodega Chestnut	200,5 × 1235,5	Scandinavian	2267 Fuji	1694 Manhattan Dust
1767	Bodega Natural	200,5 × 1235,5	Scandinavian	2265 Merapi	1695 Manhattan Cloud
0085	Dock Grey	489 × 989	Hammered	2249 Stromboli	1693 Manhattan Grey
0088	Oxyd Pure	489 × 989	Hammered	2264 Piton	1698 Marmetta Beige
1064	Prado Green	489 × 989	Hammered	2267 Fuji	1694 Manhattan Dust
1069	Etna Dark	489 × 989	Hammered	2265 Merapi	1695 Manhattan Cloud
1768	Rapolano Light Beige	489 × 989	Hammered	2264 Piton	1694 Manhattan Dust
1769	Tela Denim	489 × 989	Textile	2265 Piton	1694 Manhattan Dust
1770	Camino Light Grey	489 × 989	Hammered	2249 Stromboli	1693 Manhattan Grey
1771	Camino Medium Grey	489 × 989	Hammered	2265 Merapi	1695 Manhattan Cloud
1772	Camino Dark Grey	489 × 989	Hammered	2264 Piton	1694 Manhattan Dust
1773	Shady Concrete Grey	489 × 989	Hammered	2249 Stromboli	1699 Luberon Grey
1774	Prado Grey	489 × 989	Hammered	2264 Piton	1693 Manhattan Grey

Zoning Junctions

Jonctions de zoning

Use matching welding rods at zoning junctions to ensure aesthetic transitions with GTI® Max (or Design Tile).

Utilisez des cordons de soudure assortis aux jonctions pour assurer des transitions esthétiques avec GTI® Max (ou Design Tile).



	Colour code	Colours	Code (H009)	Color
GTI® Max	2249	Stromboli	0100	Aracaju
	2266	Vesuvio	0743	Grey
	2264	Piton	0252	Grey
	2267	Fuji	0018	Grey
	2247	Vulcano	0017	Dark Grey
	2252	Teide	0433	Grey
	2265	Merapi	0618	Light Beige
Design Tile	1696	Acero Light	0586	Light Grey
	1695	Manhattan Cloud	0586	Light Grey
	1692	Manhattan Storm	0586	Light Grey
	1699	Luberon Grey	0586	Light Grey
	1694	Manhattan Dust	0586	Light Grey
	1697	Acero Beige	0586	Light Grey
	1698	Marmetta Beige	0485	Brown
1693	Manhattan Grey	0439	Dark Grey	

Ultra Natural Look & Feel

Aspect et toucher ultra naturels

More than 60% of our collection is using our new emboss technology - designed by our Artistic Team.

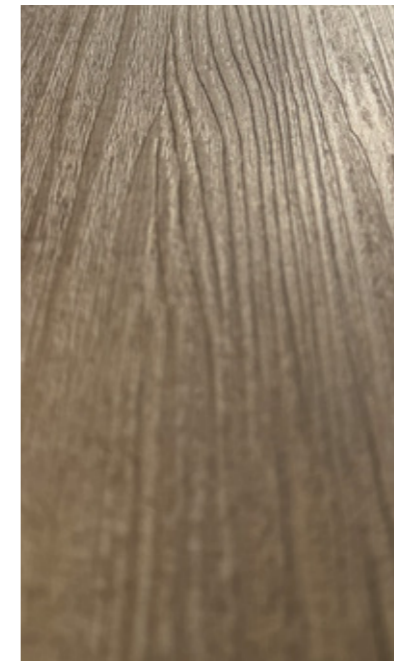
Plus de 60% de notre collection utilise notre nouvelle technologie de grainage - conçue par notre équipe artistique



Scandinavian

A delicate surface, with a linear grain that accentuates the orientation of the material.

Une surface délicate, avec un veinage linéaire qui accentue l'orientation du matériau.



Brushed

The sensory expression of rustic wood, with a structured and random surface.

L'expression sensorielle du bois rustique, avec une surface structurée et aléatoire.



Hammered

A surface with a slightly grainy feel, where subtle irregularities evoke the authenticity of stone.

Une surface légèrement granuleuse, où de subtiles irrégularités évoquent l'authenticité de la pierre.



In addition to these ultra realistic embossing, Protecshield™ surface treatment offers a velvet touch, with a matt surface, ease of maintenance and micro scratch resistance.

En plus de ces grains ultra réalistes, le traitement de surface Protecshield™ offre un toucher agréable, une finition mate, un entretien facile et une résistance aux micro-rayures.

Creation 70 MegaClic



0577 Albion



Design shade variation:
Niveau de contraste du décor
Kontraststärke des Designs

Light
Léger
Gering
 Medium
Moyen
Mittel
 High
Fort
Hoch



1763 Albion Honey



1762 Albion Beige



Albion Beige



1766 Bodega Chestnut



1767 Bodega Natural



Samples are 2.5 mm thick and therefore do not represent the actual thickness which is 6 mm.
Les échantillons ont une épaisseur de 2,5 mm et ne reflètent qui est de 6 mm.
Die Muster sind 2,5 mm dick und entsprechen nicht der tatsächlichen Gesamtdicke von 6 mm.



Bodega Natural

Creation 70 MegaClic



0545 Serena

1764 Nordic Oak Clear

1052 Muse Sand

1765 Nordic Oak Natural



Nordic Oak Clear - Prado Grey



Midwest



0538 Midwest

0357 Portobello

0358 Moon Island

0800 Toasted Wood Roadster



Design shade variation:
Niveau de contraste du décor
Kontraststärke des Designs

Light
Léger
Gering

Medium
Moyen
Mittel

High
Fort
Hoch

Samples are 2.5 mm thick and therefore do not represent the actual thickness which is 6 mm.
Les échantillons ont une épaisseur de 2,5 mm et ne reflètent qui est de 6 mm.
Die Muster sind 2,5 mm dick und entsprechen nicht der tatsächlichen Gesamtdicke von 6 mm.



1771 Camino Medium Grey



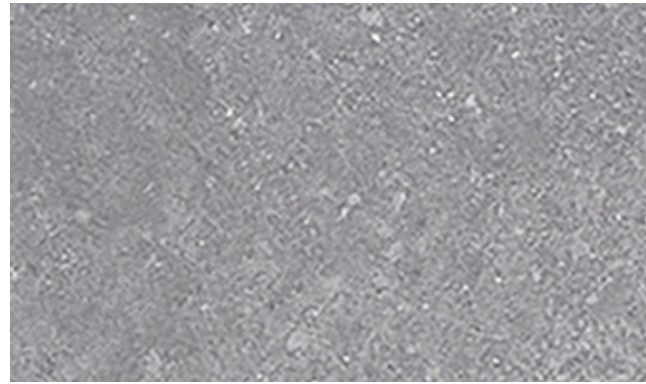
1768 Rapolano Light Beige



0088 Oxyd Pure



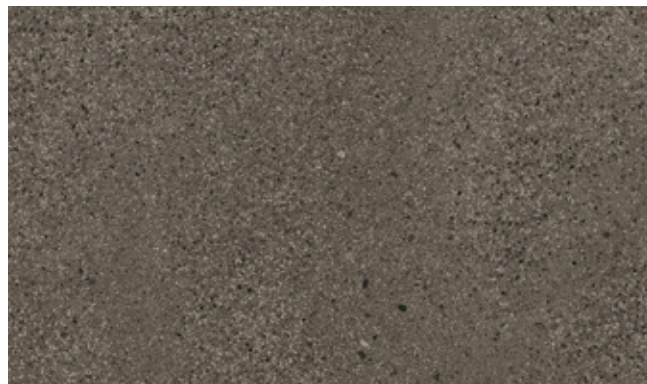
1770 Camino Light Grey



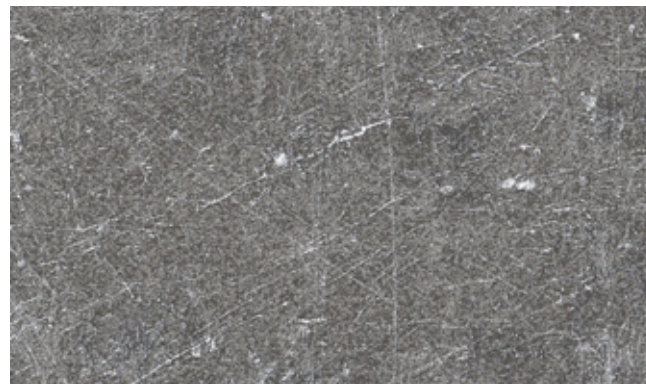
1773 Shady Concrete Grey



1774 Prado Grey



1772 Camino Dark Grey



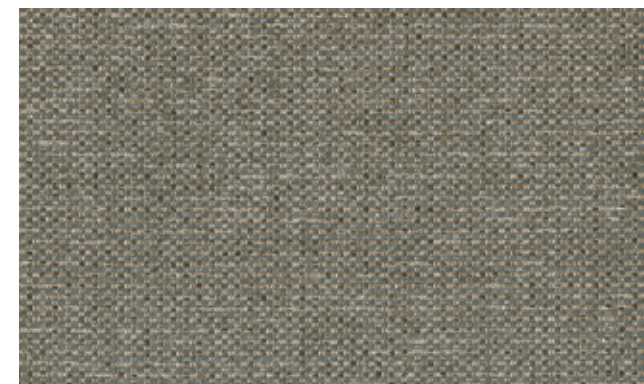
0085 Dock Grey



1064 Prado Green



1069 Etna Dark



1769 Tela Denim



Tela Denim



Z0014649

Creation 70 MegaClic

Description / Beschreibung

Total Thickness / Épaisseur totale / Gesamtdicke	EN ISO 24346	mm	6
Thickness of the wearlayer / Épaisseur couche d'usure / Dicke der Nuttschicht	EN ISO 24340	mm	0.70
Weight / Poids / Flächengewicht	EN ISO 23997	g/sqm	9230

Size / Format / Format Planken/Fliesen

Number of planks & tiles / sqm per box Nombre de lames / dalles et m ² par boîte / Planken-/Fliesenanzahl pro Karton / m ² pro Karton	ISO 24342	mm	200.5 x 1235.5 6 / 1.49	489 x 989 4 / 1.93
---	-----------	----	----------------------------	-----------------------

Classification / Klassifizierung

Norm/Product Specification / Norme / Produktnorm	-	-	EN ISO 10582
European Classification / Classement Européen / Europäische Klassifizierung	EN ISO 10874	Class	34 - 43
Fire Rating / Classement Feu / Brandverhalten	EN 13 501-1	Class	Bfl-s1
Static Electrical Propensity / Potentiel de charge / Begehaufung	EN 1815	kV	< 2
Slip Resistance Wet / Glissance humide / Rutschhemmung	DIN 51130	Class	R10

Performances / Technische Eigenschaften

Wear Resistance / Résistance à l'usure / Verschleißverhalten	EN 660.2	mm ³	≤ 2.0
Wear Group / Groupe d'abrasion / Verschleißgruppe	QB 30	group	T
Type Binder content / Teneur en agent liant / Bindemittelgehalt	ISO 10582	group	I
Impact sound insulation / Isolation acoustique bruits de chocs / Trittschallverbesserungsmaß	EN ISO 717-2	dB	5
Room Impact / Sonorité à la marche / Raumschall	NF S 31074	dB	78
Dimensional stability (norm) / Stabilité dimensionnelle (norme) / Maßstabilität (Norm)	EN ISO 23999	%	≤ 0.15
Residual Indentation / Poinçonnement statique rémanent / Resteindruck	EN ISO 24343-1	mm	≤ 0.10
Castor chair test / Essai de la chaise à roulettes / Stuhlrollenbeanspruchung	ISO 4918	-	OK
Thermal Conductivity / Conductivité thermique / Wärmeleitfähigkeit	EN ISO 10456	W/(m.K)	0.25
Colour Fastness / Solidité lumière / Lichtechtheit	EN 20 105 - B02	degree	≥ 6
Surface Treatment / Traitement de surface / Oberflächenvergütung	-	-	ProtecShield™
Chemical Products Resistance / Résistance aux produits chimiques / Verhalten gegenüber Chemikalien ⁽¹⁾	EN ISO 26987	-	OK / Sehr gut

Environment / Environnement / Umwelt

Recycled content (average) / Contenu recyclé (moyen) / Recyclinganteil	-	%	29
Recyclability / Recyclabilité / Recyclbarkeit	-	-	yes ⁽²⁾

Health / Santé / Raumluftqualität

TVOC after 28 days / TVOC après 28 jours / TVOC nach 28 Tagen	ISO 16000-6	micrograms/m ³	< 10
---	-------------	---------------------------	------

CE Marking / Marquage CE / CE Kennzeichnung



EN 14041



(1) Beständig gegenüber nicht färbenden alkoholhaltigen Handdesinfektionsmitteln, Haushaltschemikalien und verdünnten Säuren und Laugen bei kurzzeitiger Einwirkung.






(2) Through Second Life program

IMPORTANT: The information contained in this document is valid from 01/07/2026 and is subject to change at any time without notice. In the context of constantly changing technology, our customers are responsible, prior to any use, for checking with us that this document is the version in force.

Les informations contenues dans ce document sont valables à compter du : 01/07/2026 et susceptibles d'être modifiées à tout moment et sans préavis. L'évolution de la technique étant permanente, il appartient à notre clientèle avant toute mise en œuvre, de vérifier auprès de nos services que le présent document est bien celui en vigueur.

Beständig gegenüber nicht färbenden alkoholhaltigen Handdesinfektionsmitteln, Haushaltschemikalien und verdünnten Säuren sowie Laugen bei kurzzeitiger Einwirkung.

we care / we act our commitments for 2030

 <p>climate</p> <p>-30% CO₂ scopes 1, 2, 3 in tons eq. CO₂ vs 2019 Science Based Targets⁽¹⁾</p>	 <p>resources</p> <p>75% biobased, mineral and recycled content⁽²⁾</p> <p>30% recycled content⁽³⁾</p>	 <p>circularity</p> <p>65 000 tons annual volume recycled⁽⁴⁾</p> <p>45% looselay⁽⁵⁾</p>	 <p>health & well-being</p> <p>100% products better than Indoor Air Quality standards⁽⁶⁾</p> <p>95% sales covered by EPD⁽⁷⁾</p>	 <p>people</p> <p>30% women⁽⁸⁾</p> <p>40% internal mobility⁽⁹⁾</p> <p>Towards 0 accident⁽¹⁰⁾</p>
---	---	---	---	--

More details: 1. Scopes 1, 2 & 3, in absolute value, market-based. Trajectory approved by SBTi (Science Based Targets Initiative). 2. Origin of raw materials for the entire Floor & Wall portfolio, on average, by weight; including 15% virgin salt, a primary element in vinyl manufacturing. Compared to 71% in 2024. 3. Average content in the Floor & Wall vinyl portfolio, by weight. Compared to 21% in 2024. 4. Recycled in our factories and recycling units. Compared to 59 040 tons in 2024. 5. % of Floor activity with non-glued products, easy to remove, easy to re-use. Compared to 40% in 2024. 6. 100% of vinyl and linoleum sold to the building market below 100 micrograms /m³ (TVOC 28 days). 7. % of Floor & Wall activity covered by Environmental Product Declarations (EPD). Compared to 44% in 2024. 8. % women in our global workforce and among our managers. Compared to respectively 26% and 27% in 2024. 9. % job openings filled with internal hires worldwide. Compared to 25% in 2024. 10. Towards 0 accident: Lost time accident per million hours worked: below 3 vs 8,9 in 2024, for Gerflor employees worldwide.

